

A frozen moment - Spectacle Reef in 1968

Photographs from the Pat and Martin Jahn collection

In September of 1968, long-time GLLKA members Pat and Martin Jahn took their boat out to visit the Coast Guard crew at Spectacle Reef light station. We are pleased to be able to share their photographs with you, as they show how this historic light station appeared while it was still manned by four-man Coast Guard crews.



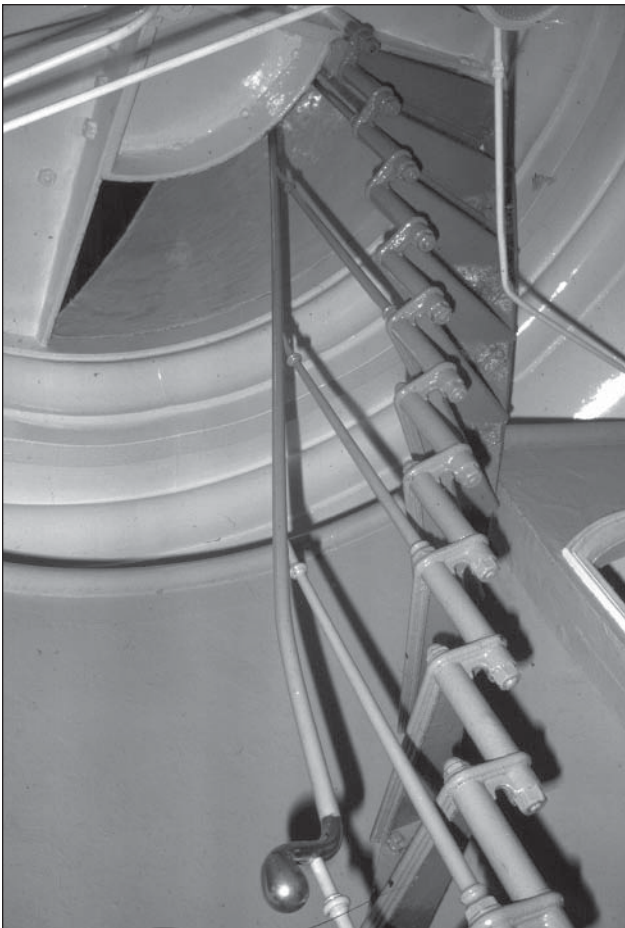
Pat & Martin Jahn

The photograph above shows Spectacle Reef as it appeared during the Jahns' visit to the light station in 1968.



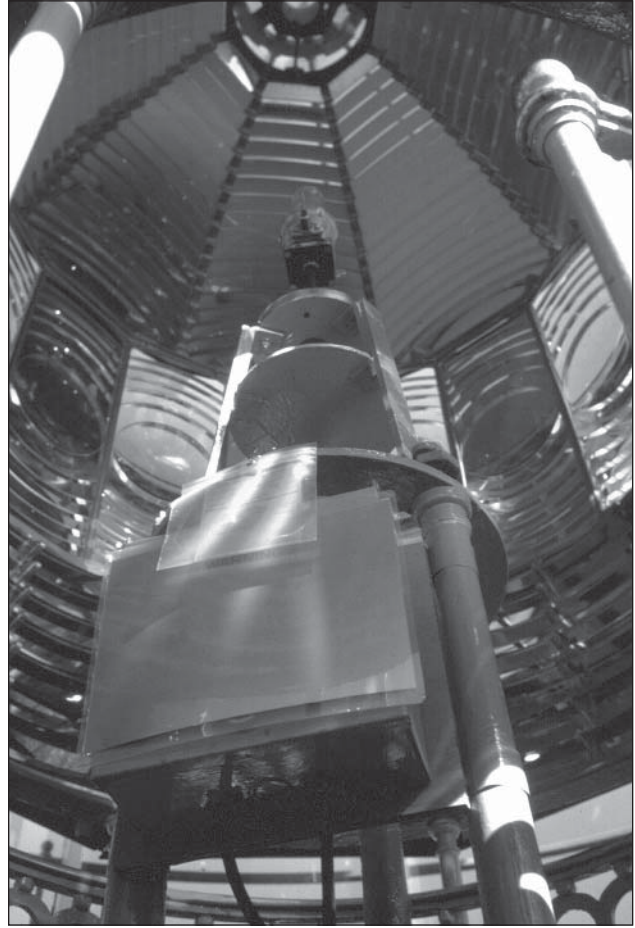
Terry Pepper

The photograph above shows "Spec" as it appears today. Note the missing boat house and fog signal chimney.



Pat & Martin Jahn

The spiral stairs leading to the service room as they appeared in 1968.



Pat & Martin Jahn

The magnificent 2nd Order Fresnel lens in its home in the lantern. Removed in 1982, the lens is now displayed in the Great Lakes Historical Society Museum in Vermilion, OH.



Pat & Martin Jahn

The Spectacle Reef office and radio room. Daily status calls were made to Cheboygan River Front Range light, which served as the operations center for the lights on Spectacle, Martin and Poe Reef.



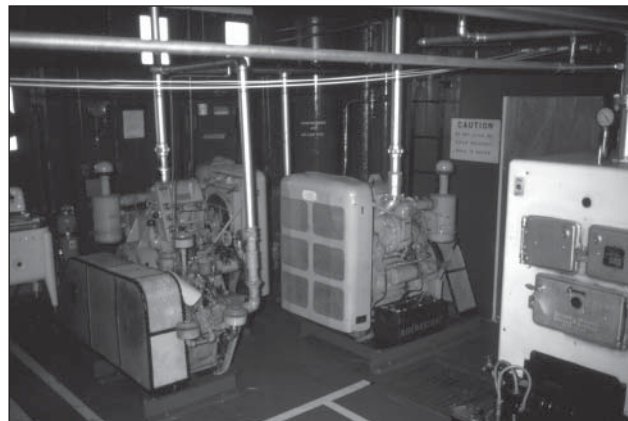
Pat & Martin Jahn

This galley served the four-man crews assigned to the station. With one man on leave at any given time, crewmembers took turns cooking for the three-man crews who remained at "Spec" at all times.



Pat & Martin Jahn

Sleeping quarters are understandably tight in a building which is only fourteen feet in diameter between its inside walls. Each of the bedrooms contained a pair of bunks similar to the one above. Note the heavy riveted door.



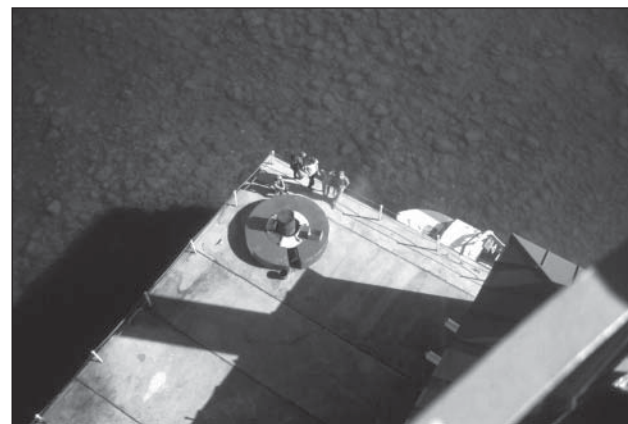
Pat & Martin Jahn

In this view, we see diesel engines which powered the generators and compressors, and the oil-fired furnace which was used for heating the building. Also note the washing machine at the left rear.



Pat & Martin Jahn

This gracefully curving ladder leads from the watch room gallery to the narrower lantern gallery, from which the station's keepers cleaned and maintained the lantern windows.



Pat & Martin Jahn

A lofty view of the crib deck from the watch room gallery. The circular "donut" on the corner of the crib is where a second crane had been located, but was removed by 1968. Note the extremely shallow water around the lighthouse.