

Excursion to Beaver Island and Beyond

Monday August 24th & Tuesday August 25th, 2009

For 2009, we are pleased to be able to offer a two-day adventure during which we will view some of northern Lake Michigan's most remote lighthouses, including South Fox Island, which is home to two of the area's most difficult to see lighthouses.

Our adventure begins bright and early on Monday August 24 as we depart the Shepler's Ferry dock in Mackinaw City and head past **Old Mackinac Point** lighthouse towards the Mighty Mackinac Bridge. After pausing beneath the bridge to take some dramatic photographs and learn the incredible story of this magnificent structure from guides Dick Moehl and Terry Pepper, we will head west through the Straits past **McGulpin Point** lighthouse towards the majestic **White Shoal** light. After circling White Shoal for some close-up photography, we will continue west to view the **Lansing Shoal** light. Built in 1928, one corner of this massive concrete structure still bears the scars from being rammed by the 1,000-footer Indiana Harbor on a foggy day in 1995.

We then take a southbound course to thread our way between High and Beaver Islands. As we reach the south end of Beaver Island, we will pass as close to shore as possible to obtain a



Virtually impossible to view without your own boat, Lansing Shoal lighthouse will be one of the first we will see on our excursion

The Beacon, Winter 2008/2009



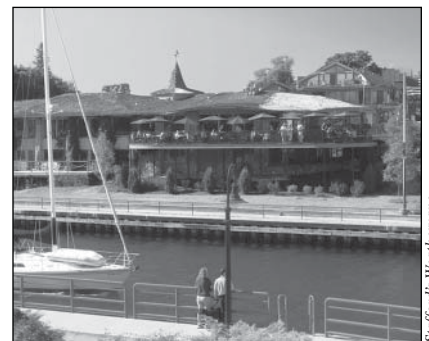
The difficult to see South Fox Island light - one of the fourteen lighthouses we will view during our August 2009 "Beaver Island and Beyond" excursion

view of the **Beaver Head** lighthouse on the bluff and its brick fog signal building on the beach. We then turn south to view the high dunes on North Fox Island as we make our way to view both **South Fox Island** lighthouses. The first light, a brick structure standing 39 feet tall was established on South Fox in 1867. This light was moved to a 106-foot iron skeleton tower erected in 1934, with the old lighthouse left to serve as the dwelling for the head keeper. This station is also home to one of the two surviving corrugated iron fog signal buildings.

After obtaining the best offshore views possible of these two elusive lights, we will set a course for Charlevoix, where we will pass beside the **Charlevoix South Pierhead** Light as we make our way between the piers into Round Lake. Upon docking in the marina, we will take a short two-block walk to our rooms in the Weathervane Terrace hotel, where our baggage will be awaiting

us. For the remainder of the afternoon you will have the opportunity to shop at the many boutiques in downtown Charlevoix or visit the Charlevoix Pierhead Light.

After dinner at the historic "gnome-styled" Weathervane Restaurant built by renowned local artisan Earl Young, there will be time for more shopping or



We will eat a fabulous buffet supper at the Weathervane Restaurant on the banks of the Pine River in Charlevoix, one of a number of "gnome houses" built in Charlevoix by artisan Earl Young

Fox Island Lighthouse Association

Stafford's Weathervane



Because deep water runs so close to the shore at Harbor Point, there are excellent photo opportunities available of Little Traverse lighthouse from the water

to watch the sunset from the pier before turning-in for a restful night's sleep at the hotel.

After a continental breakfast at the Weathervane Terrace the following morning, we will again take the short two-block walk to the marina to our waiting boat. After passing beneath the lift bridge, we will again pass between the piers and out into Lake Michigan, where after a short sail north, we will pull into Little Traverse bay for a view of the **Little Traverse** lighthouse. While the point on which the lighthouse is located has sandy beaches, the water drops off dramatically, allowing our vessel to get



On our arrival in the harbor at St. James, vans will transport us to Whiskey Point to tour the St. James Harbor lighthouse

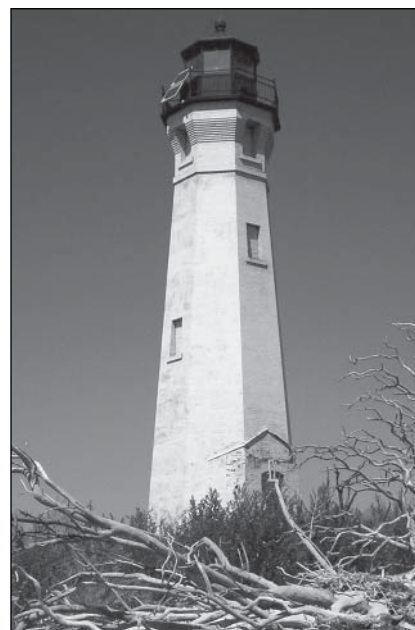
quite close to the lighthouse, which is located in the exclusive gated Harbor Point community. We will then leave the confines of the bay and make our way to Ile aux Galets and the **Skilligallee** lighthouse. With the tower being the only remaining structure, it is difficult to imagine that there was ever room on this tiny piece of land for a dwelling, oil storage building and two fog signal buildings, and served as home to three lighthouse keepers.

After viewing Skilligallee, we will then head west to St. James Harbor at the northern end of Beaver Island. Passing close by the old **St. James Harbor lighthouse** and Coast Guard station, we will dock in the harbor where awaiting vans will drive us in groups out to Whiskey Point to climb the St. James lighthouse tower. The vans will then drive us back into the village of St. James, where we will enjoy a chicken lunch at the famous Shamrock Tavern. After lunch, we will have time to explore downtown St. James and the Mormon Print Shop museum before returning to our waiting vessel for the trip back to Mackinaw City.

On our return trip, we will circle **Grays Reef** light, and then pause as close as safely possible to **Waugoshance** light, which still bears scars from its being used as a target for aircraft bombing practice during World War II. We then head east back into the Straits for

close-up offshore views of GLLK's **St. Helena Island** lighthouse, where we will learn of the incredible work which has been undertaken by GLLKA volunteers, Boy and Girl Scouts and other youth groups. Passing again beneath the Mackinac Bridge, we return to the Shepler's ferry dock with memories of the fourteen lighthouses we have seen over the past two days, and the many new friends we have made along the way.

Ticket prices for this memorable excursion will be \$395 per person double occupancy, and \$455.00 single occupancy. This price covers all expenses from our departure from Mackinaw City on Monday morning through our return late Tuesday afternoon. Non GLLKA members will need to add the cost of a membership in the Association to be eligible to participate. To pay for your reservation by check, please complete and mail the registration form on the inner removable cover of this Beacon along with your check. We will be happy to accept your reservation using a major credit card by calling the GLLKA office at 231-436-5580 between 9:00 a.m. and 4:00 p.m., Monday through Friday.



*With only the tower remaining, Skilligallee serves as a mere ghost of its former self
The Beacon, Winter 2008/2009*